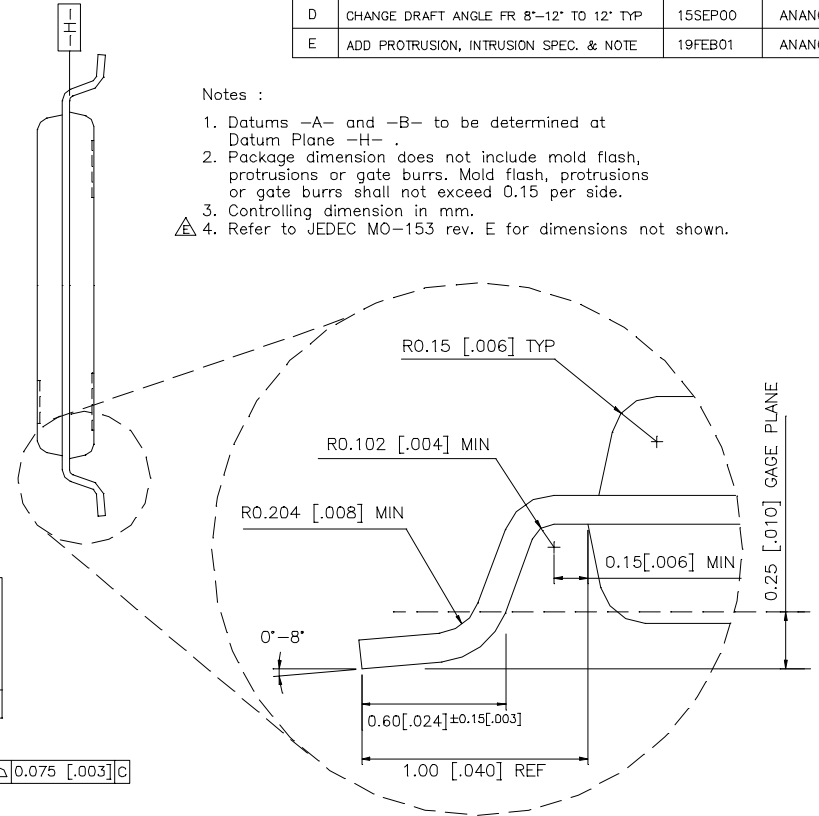


REV	DESCRIPTION	DATE	BY
A	INITIAL RELEASE	15DEC97	RICO/PD
B	CHANGE E-PIN & PIN 1 DESIGN CHANGE FOOT LENGTH FROM 0.60+0.15/-0.10 TO 0.60±0.15 AS PER JEDEC MO-153 REV. E	01JUL99	ANANG/PD
C	CHANGE COMPANY NAME AND LOGO ADD ALTERNATIVE UNIT [INCHES] ADD NOTE # 3. CONTROLLING DIMENSION IN MM	26MAY00	ANANG/PD
D	CHANGE DRAFT ANGLE FR 8°-12° TO 12° TYP	15SEP00	ANANG/PD
E	ADD PROTRUSION, INTRUSION SPEC. & NOTE	19FEB01	ANANG/PD

Notes :

- Datums -A- and -B- to be determined at Datum Plane -H- .
- Package dimension does not include mold flash, protrusions or gate burrs. Mold flash, protrusions or gate burrs shall not exceed 0.15 per side.
- Controlling dimension in mm.
- Refer to JEDEC MO-153 rev. E for dimensions not shown.



PROJECTION		UNIT	TITLE	
		MM [INCHES]	56 LD TSSOP FINISHED PACKAGE OUTLINE DRAWING (0.50 MM PITCH)	
APPROVAL	DATE	DRAWING NO.		
ANANG	19FEB01	DG 6057		REV. E
CHECKED	RICO	SCALE DO NOT SCALE SHEET 1 OF 1		
APPROVED	ALLAN			
RELEASED	DOCON			